



# Student Apartment Guide

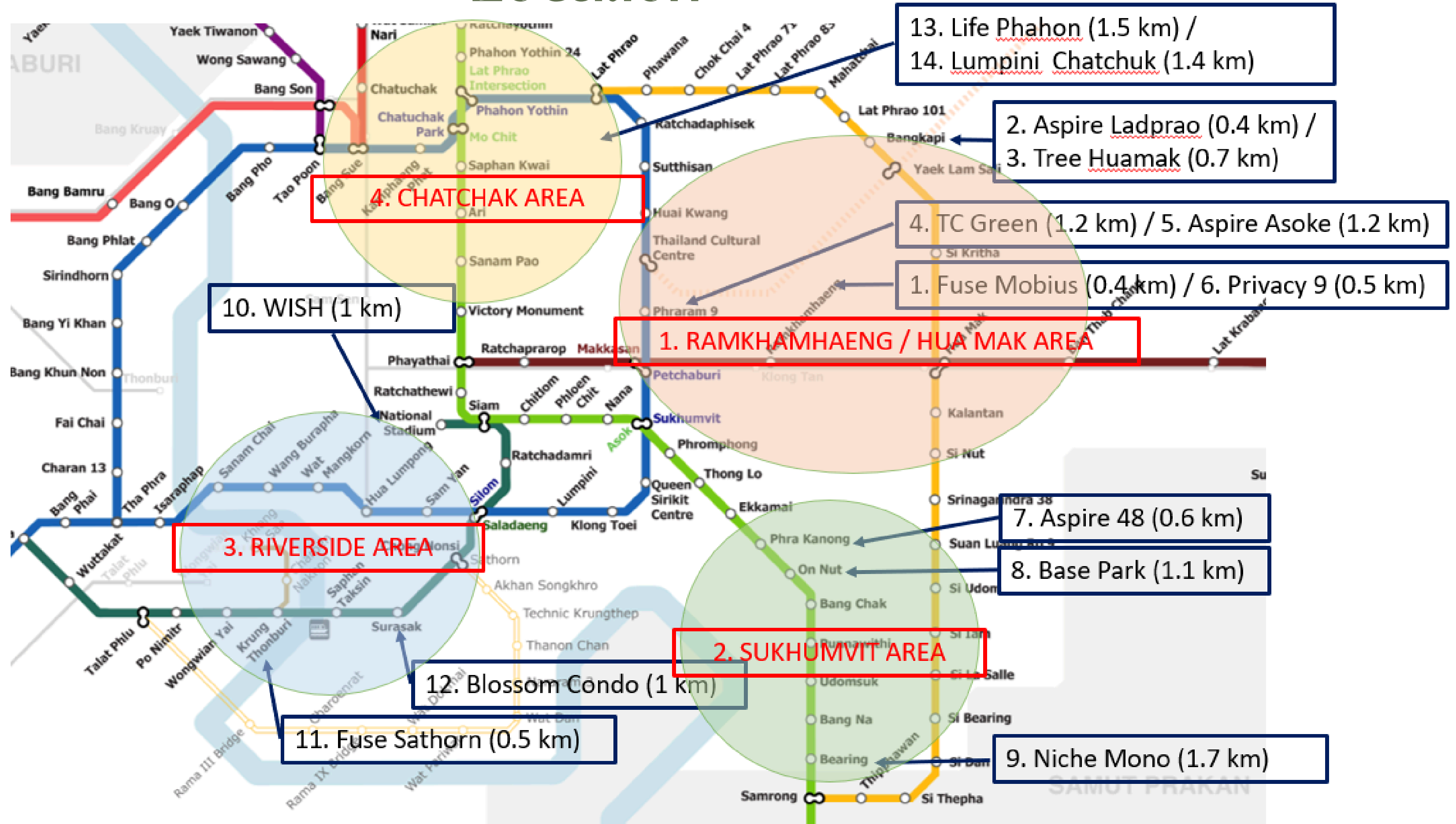


## Accommodation List

Projects	Price (THB)	Type	Size (m <sup>2</sup> )	Location	Train	Station
1. Fuse Mobius	7,000 – 10,000	1 bed / studio	25 to 30	Ramkhamhaeng	ARL	Ramkhamhaeng (0.4km)
2. Aspire <a href="#">Ladprao 113</a>	8,000 – 10,000	1 bed / studio	25 to 29	<a href="#">Ladprao 113</a>	MRT Yellow	Bang Kapi (0.4 km)
3. The Tree <a href="#">Huamak Interchange</a>	9,500 – 18,000	1 or 2 beds / studio	23 to 48	Ramkhamhaeng	MRT Yellow	Bang Kapi (0.7 km)
4. TC Green Rama	10,000 – 19,000	1 bed / studio	30 to 41	Rama 9	MRT Blue	Phra Ram 9 (1.2 km)
5. Aspire Asoke – Ratchada	12,000 – 17,000	1bed / studio	25 to 35	Rama 9	MRT Blue	Phra Ram 9 (1.2 km)
6. The Privacy Rama 9	11,000 – 19,000	1 or 2 beds / studio	24 to 39	Rama 9 – Ramkhamhaeng	ARL	Ramkhamhaeng (0.5 km)
7. Aspire Sukhumvit 48	10,000 – 15,000	1 bed / studio	27 to 39	Phra Khanong – On Nut	BTS Sukhumvit	Phra Khanong (0.6 km)
8. The Base Park West – Sukhumvit 77	12,000 – 16,000	1 bed	28 to 31	On Nut	BTS Sukhumvit	On Nut (1.1 km)
9. Niche Mono Sukhumvit – Bearing	10,000 – 16,000	1 bed / studio	28 to 37	Sukhumvit – Bearing	BTS Sukhumvit	Bearing (1.7 km)
10. WISH @ SIAM	12,000 – 18,000	1 bed / studio	28 to 45	<a href="#">Ratchatewi – Siam</a>	BTS Silom	National Stadium (1 km)
11. Fuse Sathorn – <a href="#">Taksin</a>	11,000 – 17,000	1 bed / studio	27 to 35	Sathorn – <a href="#">Taksin</a>	BTS Silom	Krung Thon Buri (0.5 km)
12. Blossom Condo @ Sathorn – <a href="#">Charoenrat</a>	13,000 – 19,000	1 bed	30 to 55	Sathorn	BTS Silom	<a href="#">Surasak</a> (1 km)
13. Life @ <a href="#">Phahon 18</a>	11,000 – 14,000	1 bed	30 to 45	<a href="#">Jatujak</a>	BTS Sukhumvit	Mo Chit (1.5 km)
14. <a href="#">Lumpini Park Vibhavadi – Chatchuk</a>	10,000 – 15,000	1 bed / studio	23 to 30	Mo Chit	BTS Sukhumvit	Mo Chit (1.4 km)

## Accommodation List

# Location



# 1. Fuse Mobius

## Address:

Soi Kamnoet Sap, Suan Luang,  
Bangkok 10250

## Type:

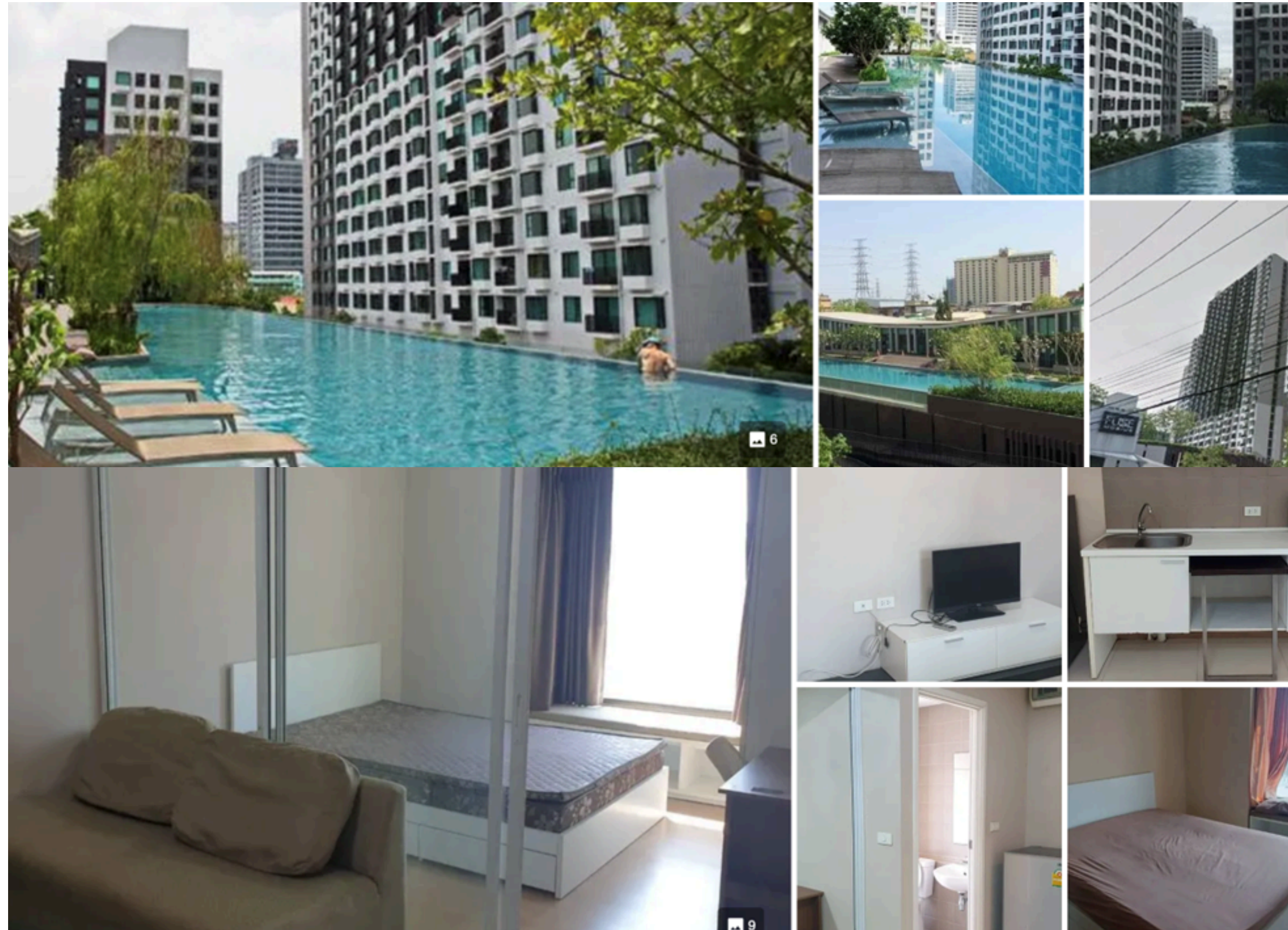
1 bed / studio

Size (m<sup>2</sup>): 25 to 30

Rental Fee 7,000 - 10,000 THB  
per month

### Details

Completed	December 2011
Contract Period	6 Months (Minimum)
Furniture	Provided
Facilities	Parking, Children Area, Gym, Security, Swimming Pool



## 2. Aspire Ladprao 113

### Address:

3095 Soi Lat Phrao 113, Khlong Chan, Bang Kapi, Bangkok 10240

### Type:

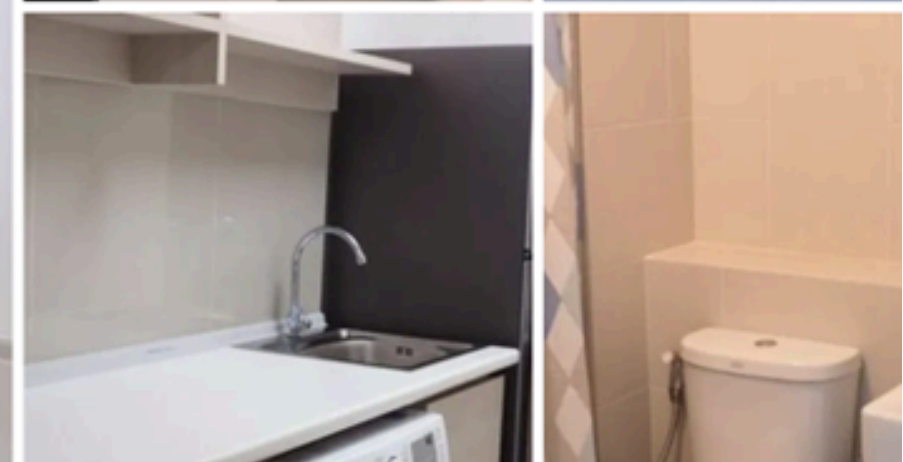
1 bed / studio

Size (m<sup>2</sup>): 25 to 29

Rental Fee (THB / month):  
8,000 – 10,000

### Details

Completed	July 2017
Contract Period	6 Months (Minimum)
Furniture	Provided
Facilities	Parking, Gym, Security, Swimming Pool



# 3. The Tree Huamak Interchange

## Address:

869 Ramkhamhaeng Rd, Hua Mak, Bang Kapi District, Bangkok 10240

## Type:

1 or 2 beds / studio

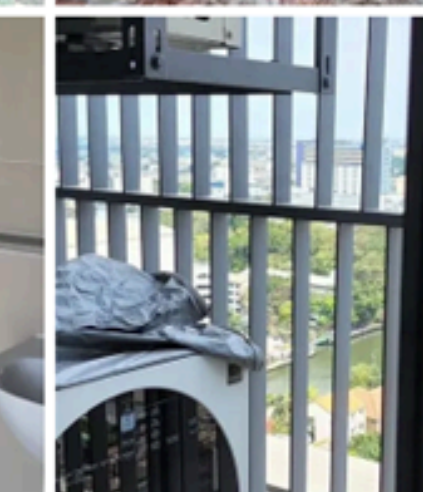
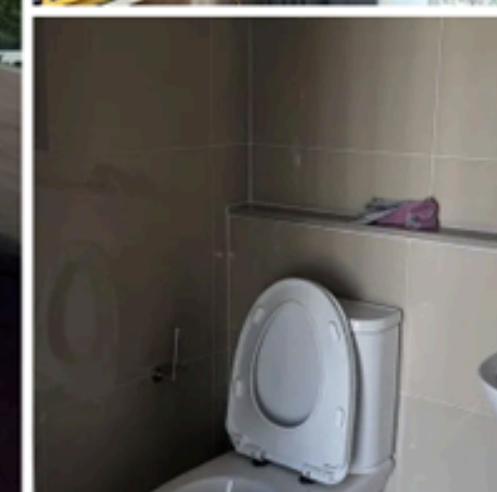
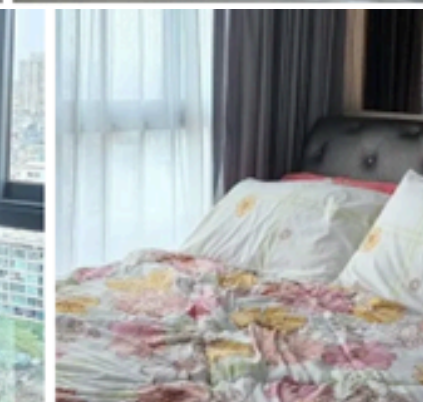
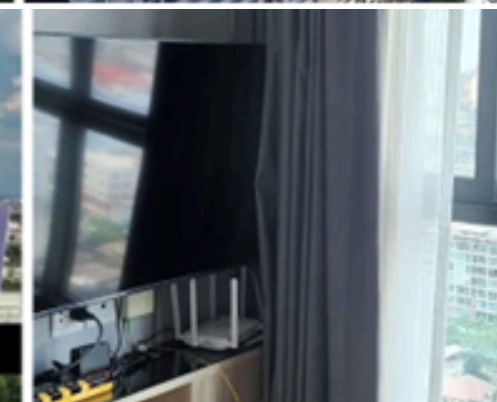
Size (m2): 23 to 48

Rental Fee (THB / month):

9,500 – 18,000

### Details

Completed	December 2020
Contract Period	6 Months (Minimum)
Furniture	Provided
Facilities	Parking, Concierge, Gym, Security, Swimming Pool



## 4. TC Green Rama

### Address:

TC Green Condominium Rama IX Rd, HuaiKhwang, Bangkok 10310

### Type:

1 bed / studio

Size (m2): 30 to 41

Rental Fee (THB / month):  
10,000 – 19,000

### Details

Completed June 2013

Contract Period 6 Months (Minimum)

Furniture Provided

Facilities Parking, Children Area, Garden, Gym, Library, Office Room, Sauna, Security, Swimming Pool



# 5. Aspire Asoke – Ratchada

## Address:

729/4 Soi Pracha Songkhro 2,  
Pracha Songkhro Rd, Din Daeng,  
Bangkok 10400

## Type:

1 bed / studio

Size (m<sup>2</sup>): 25 to 35

Rental Fee (THB / month):  
12,000 – 17,000

### Details

Completed	August 2020
Contract Period	6 Months (Minimum)
Furniture	Provided
Facilities	Parking, Garden, Gym, Office Room, Sauna, Security, Swimming Pool



# 6. The Privacy – Rama 9

## Address:

Soi Ramkhamhaeng 2, Suan Luang, Bangkok 10250

## Type:

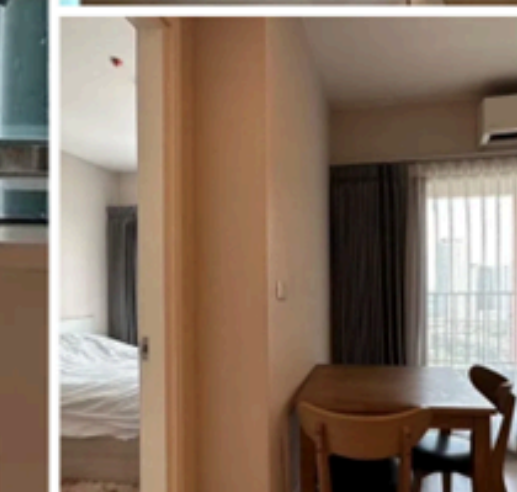
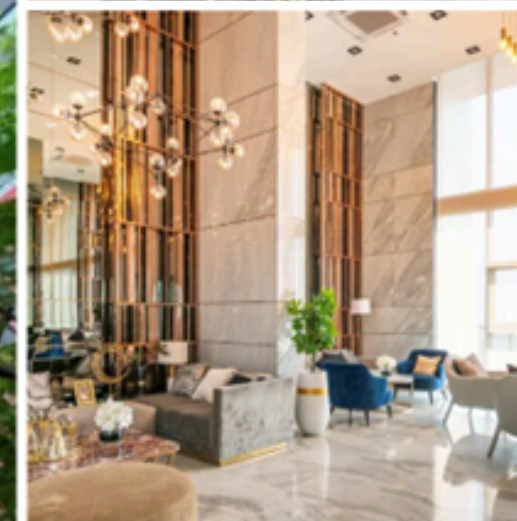
1 or 2 beds / studio

Size (m2): 24 to 39

Rental Fee (THB / month):  
11,000 – 19,000

### Details

Completed	January 2020
Contract Period	6 Months (Minimum)
Furniture	Provided
Facilities	Parking, Concierge, Garden, Gym, Library, Office Room, Sauna, Security, Swimming Pool



# 7. Aspire Sukhumvit 48

## Address:

Soi Sukhumvit 48, Phra Khanong, Khlong Toei, Bangkok 10110

## Type:

1 bed / studio

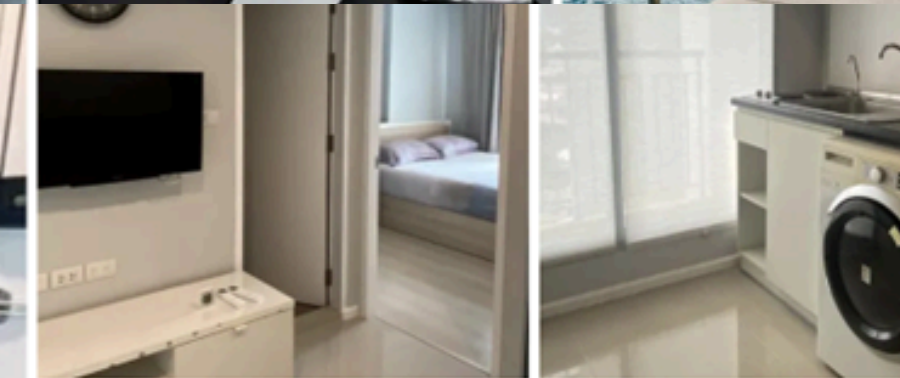
Size (m2): 25 to 30

Rental Fee (THB / month):

7,000 – 10,000

### Details

Completed	December 2013
Contract Period	6 Months (Minimum)
Furniture	Provided
Facilities	Parking, Concierge, Garden, Gym, Security, Swimming Pool



# 8. The Base Park West – Sukhumvit 77

## Address:

Soi PridiPhanomyong 2, Phra Khanong Nuea, Vadhana, Bangkok 10110

## Type:

1 bed

Size (m2): 28 to 31

Rental Fee (THB / month):  
12,000 – 16,000

Details	
Completed	December 2015
Contract Period	6 Months (Minimum)
Furniture	Provided
Facilities	Parking, Concierge, Garden, Gym, Security, Swimming Pool



# 9. Niche Mono Sukhumvit - Bearing

## Address:

Samrong Nuea, Mueang Samut Prakan, Samut Prakan 10270

## Type:

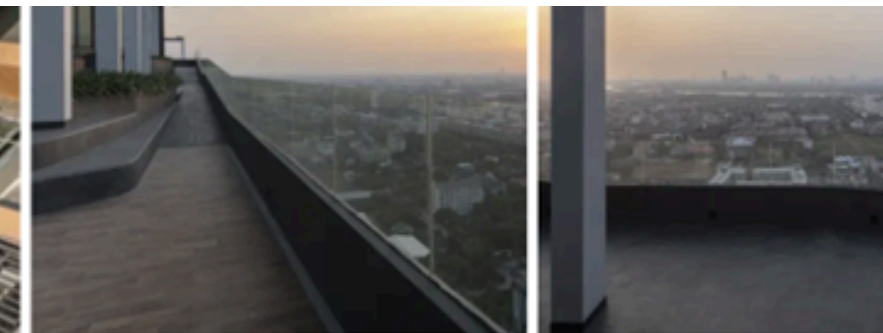
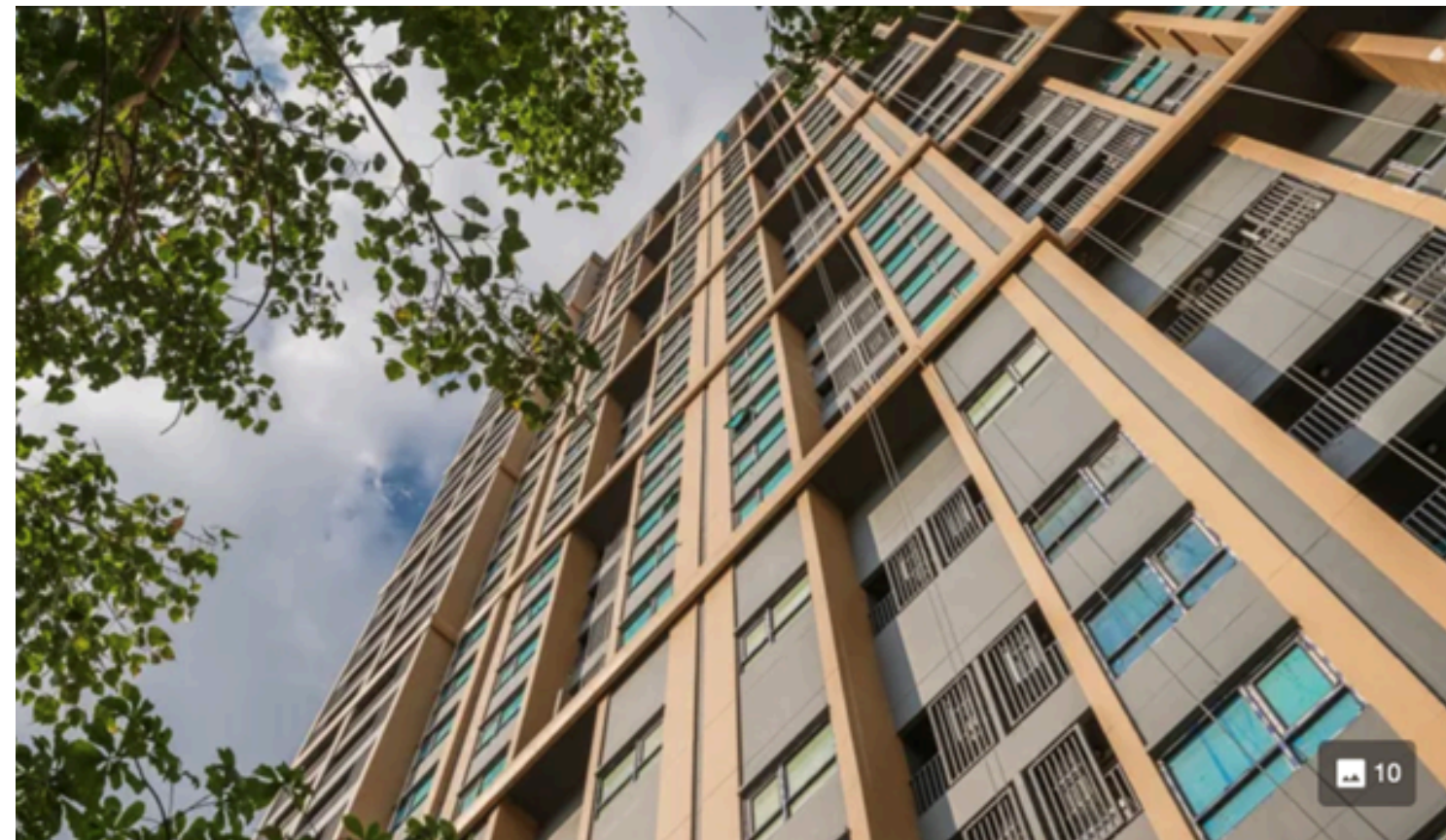
1 bed / studio

Size (m2): 28 to 37

Rental Fee (THB / month):  
10,000 – 16,000

### Details

Completed	April 2020
Contract Period	6 Months (Minimum)
Furniture	Provided
Facilities	Parking, Concierge, Garden, Gym, Jacuzzi, Office Room, Security, Swimming Pool



# 10. WISH @ SIAM

## Address:

Soi Phayanak, Thanon Phet Buri,  
Ratchathewi, Bangkok 10400

## Type:

1 bed / studio

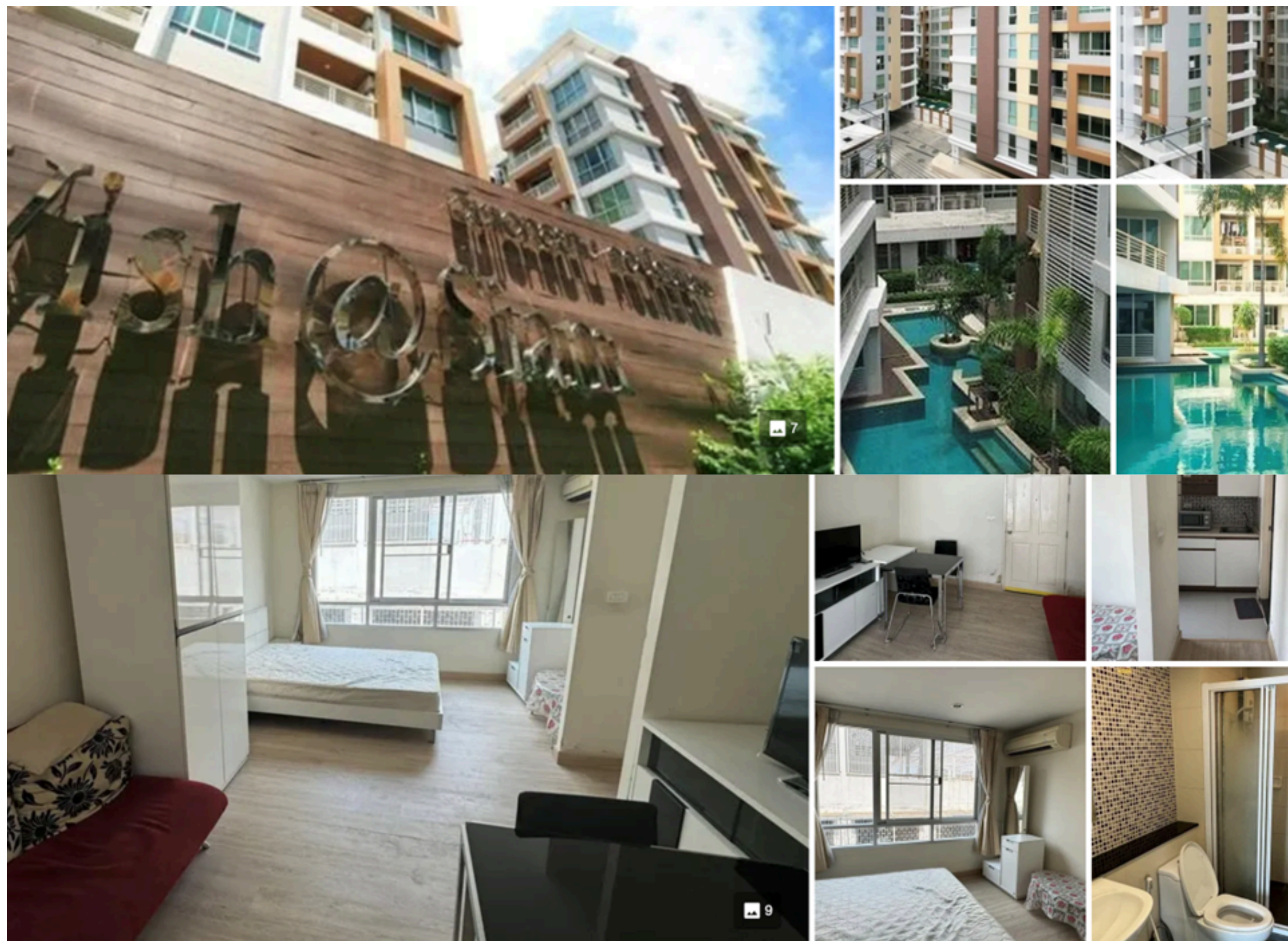
Size (m2): 28 to 45

Rental Fee (THB / month):

12,000 – 18,000

### Details

Completed	December 2008
Contract Period	6 Months (Minimum)
Furniture	Provided
Facilities	Parking, Gym, Security, Swimming Pool



# 11. Fuse Sathorn – Taksin

## Address:

88/307 Krung Thon Buri Rd., Bang Lamphu Lang, Khlong San, Bangkok 10600

## Type:

1 bed / studio

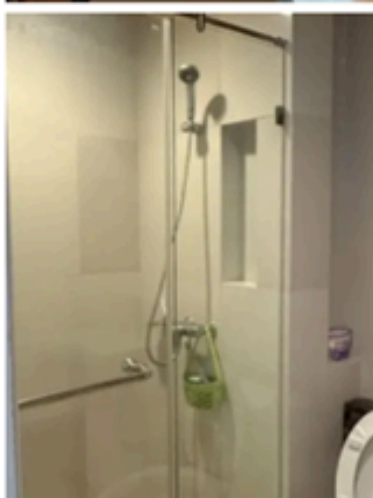
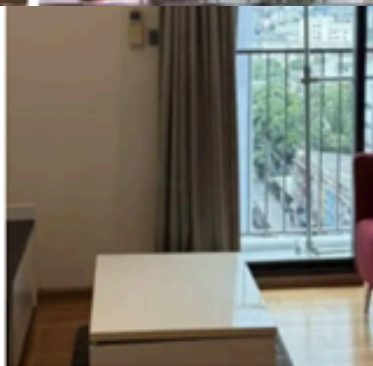
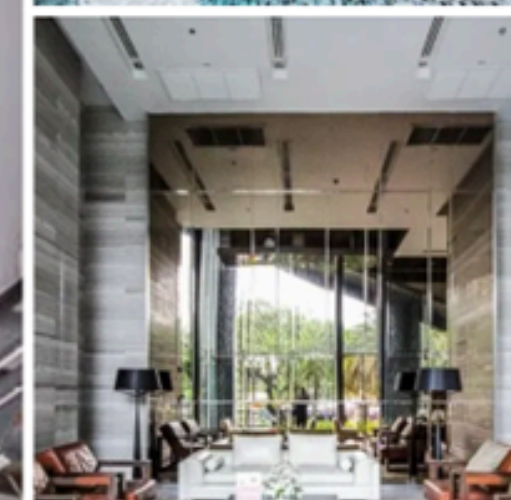
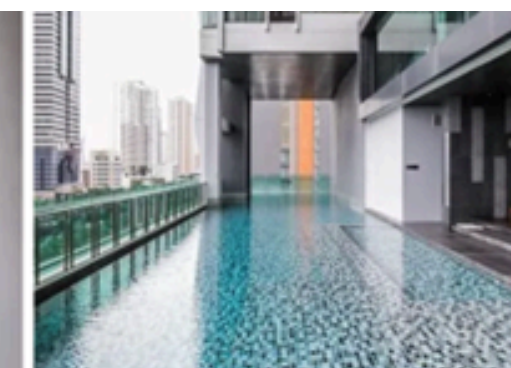
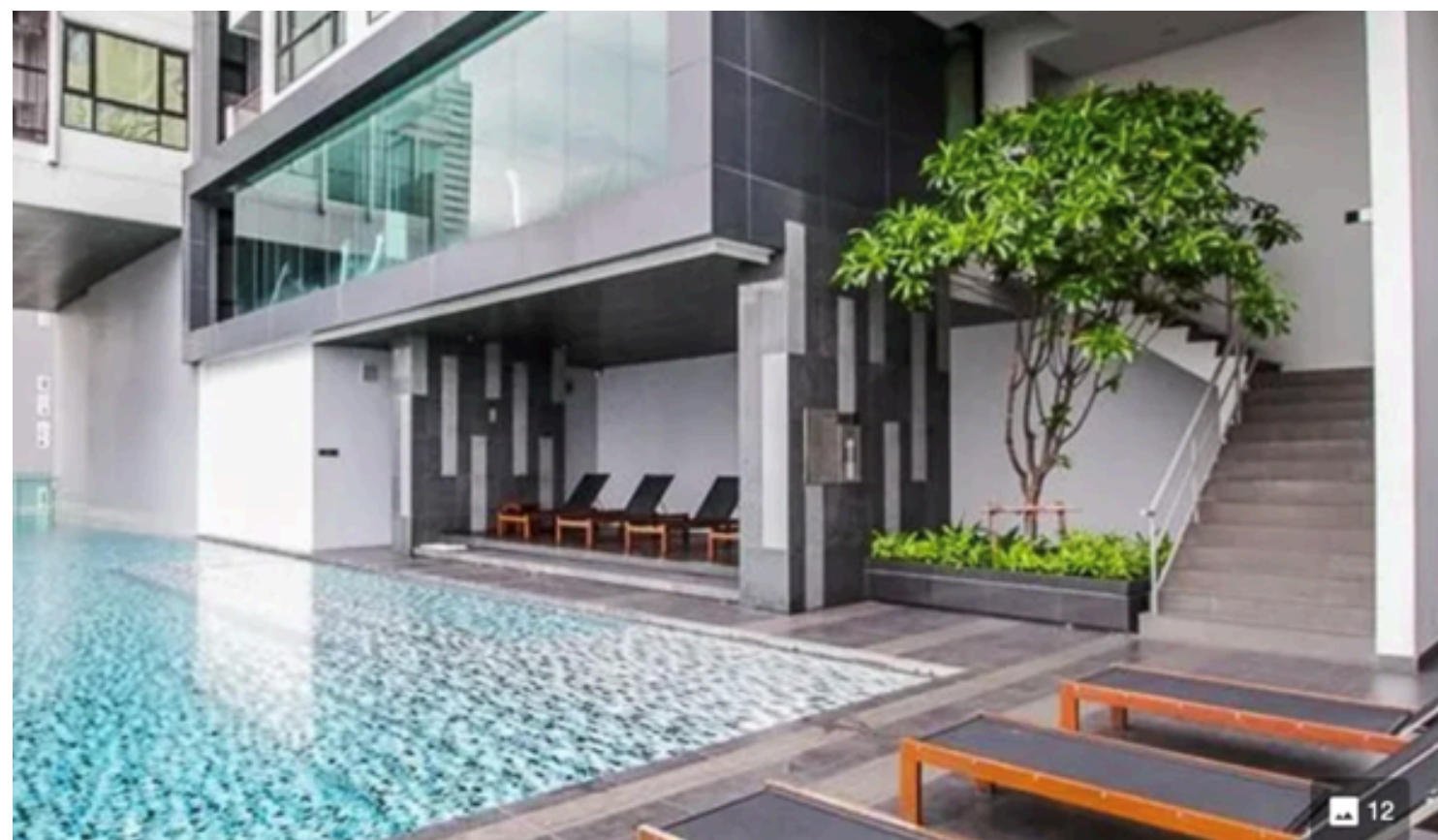
Size (m<sup>2</sup>): 27 to 35

Rental Fee (THB / month):

11,000 – 17,000

## Details

Completed	December 2011
Contract Period	6 Months (Minimum)
Furniture	Provided
Facilities	Parking, Concierge, Garden, Gym, Library, Security, Swimming Pool



# 12. Blossom Condo @ Sathorn - Charoenrat

## Address:

258 Charoen Rat Rd., Thung Wat Don, Sathon, Bangkok 10120

## Type:

1 bed

Size (m2): 30 to 55

Rental Fee (THB / month):

13,000 – 19,000

### Details

Completed	November 2018
Contract Period	6 Months (Minimum)
Furniture	Provided
Facilities	Parking, Children Area, Concierge, Gym, Security, Swimming Pool



# 13. Life @ Phahon 18

## Address:

1038/90 Soi Phahon Yothin 18,  
Yaek 4, Soi Phahon Yothin 18 Yaek  
4, Chomphon, Chatuchak,  
Bangkok 10900

## Type:

1 bed

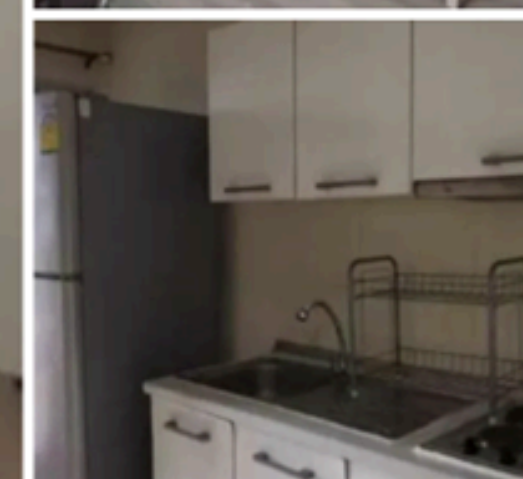
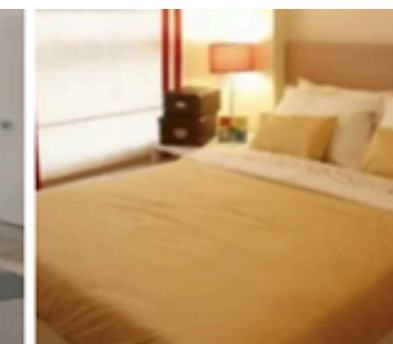
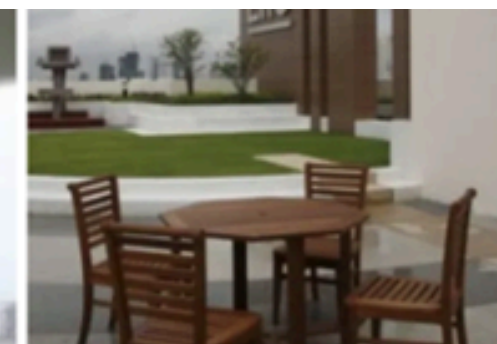
Size (m<sup>2</sup>): 30 to 45

Rental Fee (THB / month):

11,000 – 14,000

## Details

Completed	2013
Contract Period	6 Months (Minimum)
Furniture	Provided
Facilities	Parking, Garden, Gym, Sauna, Security, Swimming Pool



# 14. Lumpini Park Vibhavadi - Chatchuk

## Address:

161/1 Soi VibhavadiRangsit 5, Yaek  
5, VibhavadiRangsit Rd,  
Chomphon, Chatuchak, Bangkok  
10900

## Type:

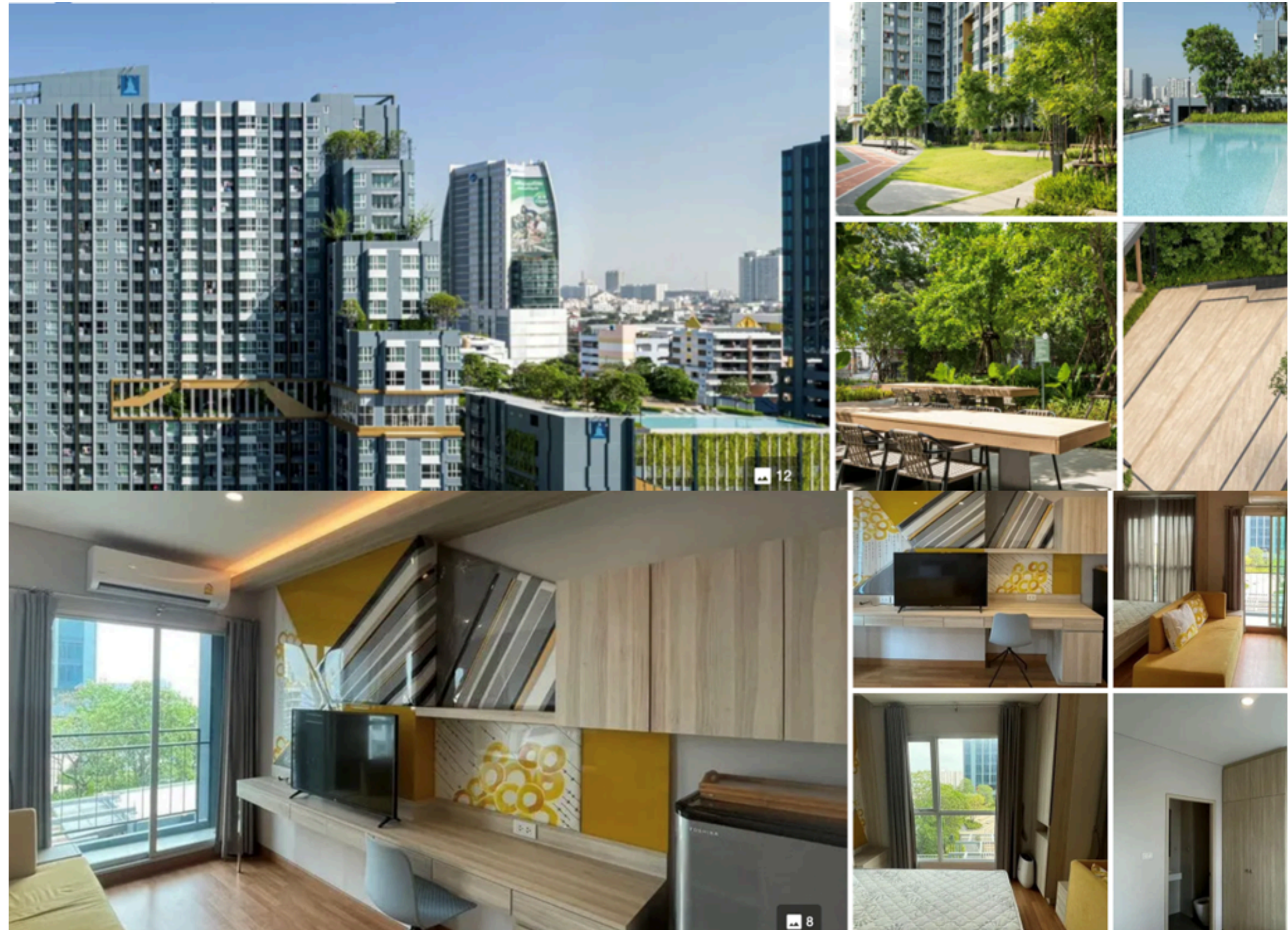
1 bed / studio

Size (m2): 23 to 30

Rental Fee (THB / month):  
10,000 – 15,000

## Details

Completed	December 2019
Contract Period	6 Months (Minimum)
Furniture	Provided
Facilities	Parking, Concierge, Garden, Gym, Jacuzzi, Office Room, Sauna, Security, Swimming Pool



## Accommodation Request Sheet

Students' Information	
Name	
Nationality	
Age	
Occupation	
Address in Thai	
Visa	
Phone Number in Thai	
Contact Information (LINE, WhatsApp, Facebook, E-mail etc.)	
Budget (THB / Month)	
Number of People Staying	
Kids or Pets	
Move in Plan (When)	
Desired Area (choose one or put the them in order) 1. Ramkhamhaeng Area 2. Sukhumvit Area 3. Riverside Area 4. <u>Chatuchak Area</u>	

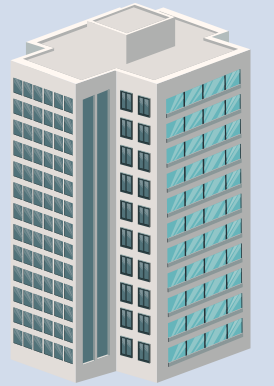
## GEOS Accommodation Service (1)

GEOS will help students find accommodation in Bangkok for 3,000 THB.

### Service

GEOS Accommodation Service includes:

- Introducing reliable real-estate agencies
- Assisting with obtaining TM-30 form  
*(Resident certificate required for immigration purposes)*
- Accompanying students to visit one condominium, providing translation support, and giving helpful advice *(Additional visits available at 2,000 THB per visit.)*



### Flow

1. GEOS → Students: GEOS sends the “GEOS Student Apartment Guide.”
2. Students → GEOS: Students complete and return the “Accommodation Request Sheet.”
3. GEOS → Real-Estate Agency: GEOS forwards the Request Sheet to the agency.
4. Agency → GEOS: The agency identifies suitable condominiums and informs GEOS.
5. GEOS → Students: GEOS shares condominium options with students.
6. Students → GEOS: Students select condominiums and notify GEOS.
7. GEOS → Agency: GEOS informs the agency of students’ choices.
8. Agency → GEOS *(If a condominium is available.)*: The agency confirms possible dates and times for visits.
9. GEOS → Students: GEOS coordinates with students to set the date and time.
10. GEOS → Agency: GEOS confirms the scheduled visit.
11. GEOS & Students: Conduct the condominium visit.

## GEOS Accommodation Service (2)

### Note

#### First Payment

Your first payment to the property owner includes:

1. **Advance Rent:** One month's rent is paid upfront to secure your room. Please pay this as soon as possible.
2. **Security Deposit:** Equivalent to two months' rent. This deposit is refundable at the end of your lease if there are no damages or outstanding bills. Any deductions will be based on the property's condition upon moving out. Please pay this deposit when you sign the rental contract.

#### Important Notes

1. The GEOS Accommodation Service fee (3,000 THB) must be paid at the time of registration.
2. The Accommodation Service is available only with an ED visa package. (It is not available separately.)
3. Accommodation Service begins after payment is completed.
4. Condominiums listed in the "Student Apartment Guide" are examples and may not be available at the time of your registration. We will find similar condominiums based on your preferences. *(Bangkok housing is in high demand, so availability can change quickly.)*
5. Water and electricity costs are not included in the rental fees.

